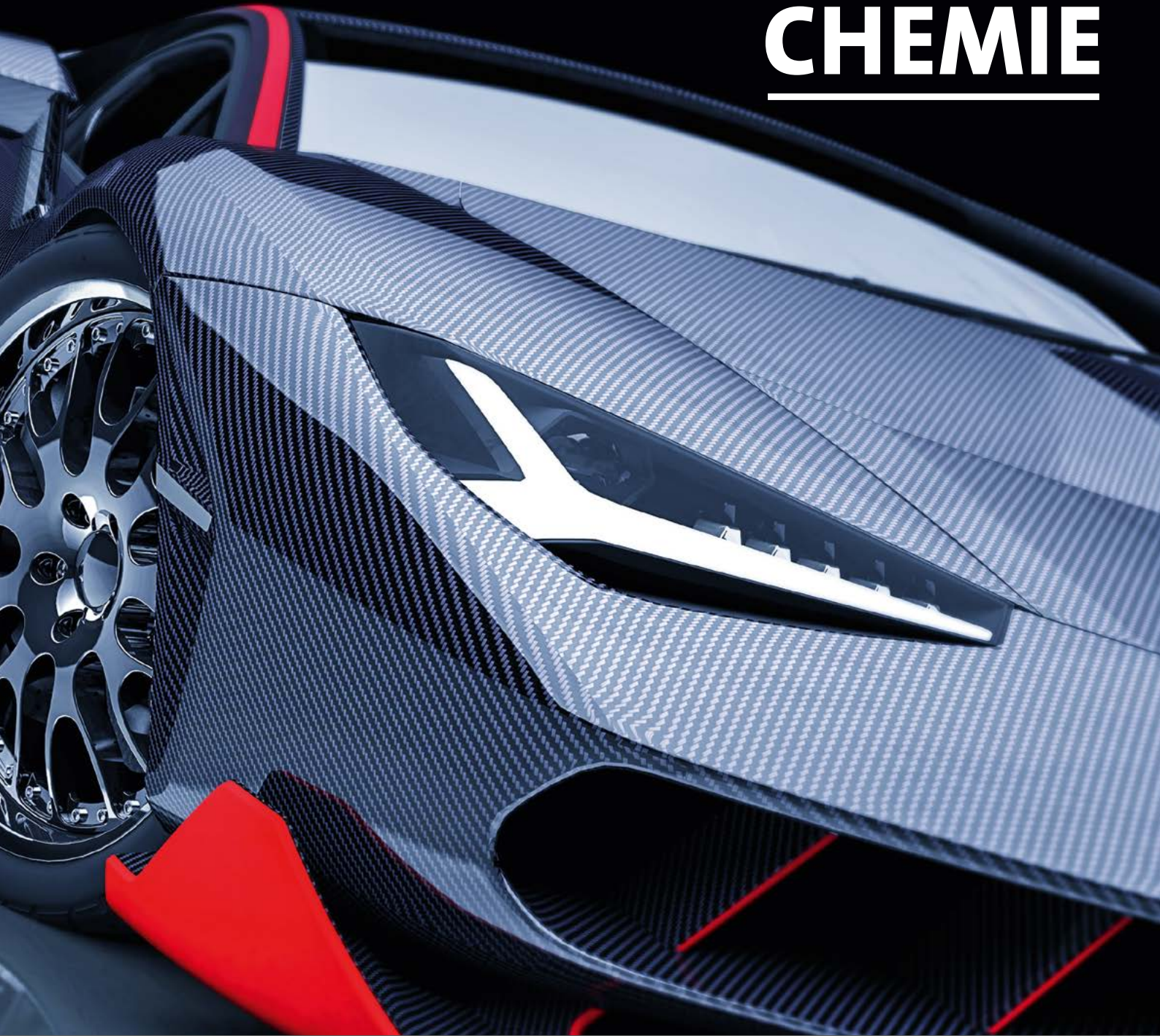

BODO MÖLLER
CHEMIE



Products for mold making
and composite manufacturing



Proven solutions for

BODO MÖLLER CHEMIE is an expert for composite and tooling materials. We offer application-specific solutions for all common manufacturing processes in industries such as automotive, bus, truck, rail, aerospace, wind energy, marine, sports and leisure.

The comprehensive range of products includes formulated epoxy resin systems, fiber reinforcements, tooling boards, mold making silicones, casting resins, laminating resins as well as gelcoats and coupling layers.



all major applications

Product selection

Formulated composite systems

RenLam® Formulated resin systems

Araldite® Formulated resin systems

Specialties for manufacturers & formulators

Araldite® Epoxy base resins

Aradur® Epoxy base hardener

Kerimid® Bismaleimides

Matrimid® Polyimides and bismaleimides

Rhodefal® Polyamidoimides, polyamideimides

Tactix® Bisphenol-A epoxy resins

Fiber reinforcements

Coated yarns

Glass and carbon fiber fabrics and scrim

Glass and carbon thermoplastic preregs

Tooling boards

UREOL® Epoxy tooling boards

UREOL® Polyurethane tooling boards

Silicone mold making materials

Bluesil™ Silicone RTVs (2C)

Silastic™ High strength RTVs

Casting resins

RenCast® Epoxy casting resins (2C)

RenCast® Polyurethane fast casting resins (2C)

Auxiliaries for tooling & mold making

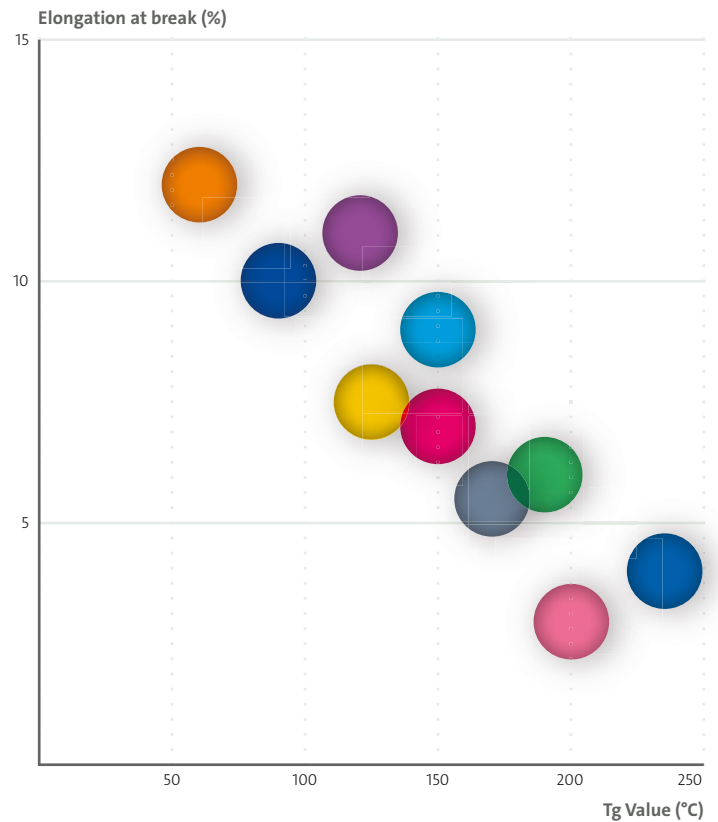
Araldite® Color pastes

Araldite® Fillers

RenLease® Wax and silicone based release agents

Gelcoats & coupling layers

RenGel™ Epoxy gelcoats and coupling layers

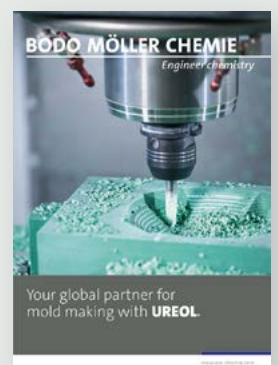


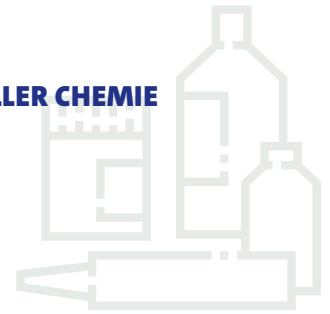
Formulated composite systems

- RenLam® M1 / HY 956
- Araldite® XB 3585 / XB 3486
- Araldite® LY 5052 / 5052
- RenLam® LY 113 / HY 98
- Araldite® LY 556 / 22962
- Araldite® LY 556 / 917-1 / DY 070
- Araldite® LY 556 / HY 906 / DY 070
- Araldite® LY 556 / XB 3473
- Araldite® CY 179-1 / 917-1 / DY 070
- Araldite® XB 9721 / XB 3473

UREOL®
by BODO MÖLLER CHEMIE

Detailed information about our original **UREOL**® tooling boards can be found in this separate brochure.





Formulated composite systems

	Pot life at 25 °C	Viscosity at 25 °C	Gel time at 80 °C	Tg Value	Flexural elongation
RenLam® M1 / HY 956	30 min	1200 mPa*s	5 min	60 °C	12 %
Araldite® XB 3585 / XB 3486	530 min	550 mPa*s	35 min	90 °C	10 %
Araldite® LY 5052 / 5052	140 min	600 mPa*s	15 min	120 °C	11 %
RenLam® LY 113 / HY 98	100 min	300 mPa*s	20 min	125 °C	7,5 %
Araldite® LY 556 / 22962	150 min	1900 mPa*s	20 min	150 °C	9 %
Araldite® LY 556 / 917-1 / DY 070	100 h	750 mPa*s	150 min	150 °C	7 %
Araldite® LY 556 / HY 906 / DY 070	52 h	2000 mPa*s	240 min	170 °C	5,5 %
Araldite® LY 556 / XB 3473	35 h	5600 mPa*s	>600 min	190 °C	6 %
Araldite® CY 179-1 / 917-1 / DY 070	48 h	150 mPa*s	70 min	200 °C	3 %
Araldite® XB 9721 / XB 3473	85 h	15500 mPa*s	> 600 min	235 °C	4 %

Silicone mold making materials

	Pot life at 25 °C	Viscosity at 25 °C	Demolding time at 25 °C	Shore A	Elongation at break
Bluesil™ RTV 3428 A&B	60 min	13000 mPa*s	16 h	28	600 %
Silastic™ RTV-4234-T-4	90 min	35000 mPa*s	12 h	40	400 %

Casting resins

	Pot life at 25 °C	Viscosity at 25 °C	Demolding time at 25 °C	Thermal stability	Linear shrinkage	
RenCast® CW 2215 / HY 5161	Yellow	45 min	5000 mPa*s	–	60 °C	0,7 mm/m
RenCast® CW 2418-1 / HY 5160	Black	120 min	4000 mPa*s	–	55 °C	0,1 mm/m
RenCast® CW 47 / HY 33	Grey	240 min	17000 mPa*s	–	210 °C	1,0 mm/m

Gelcoats & coupling layers

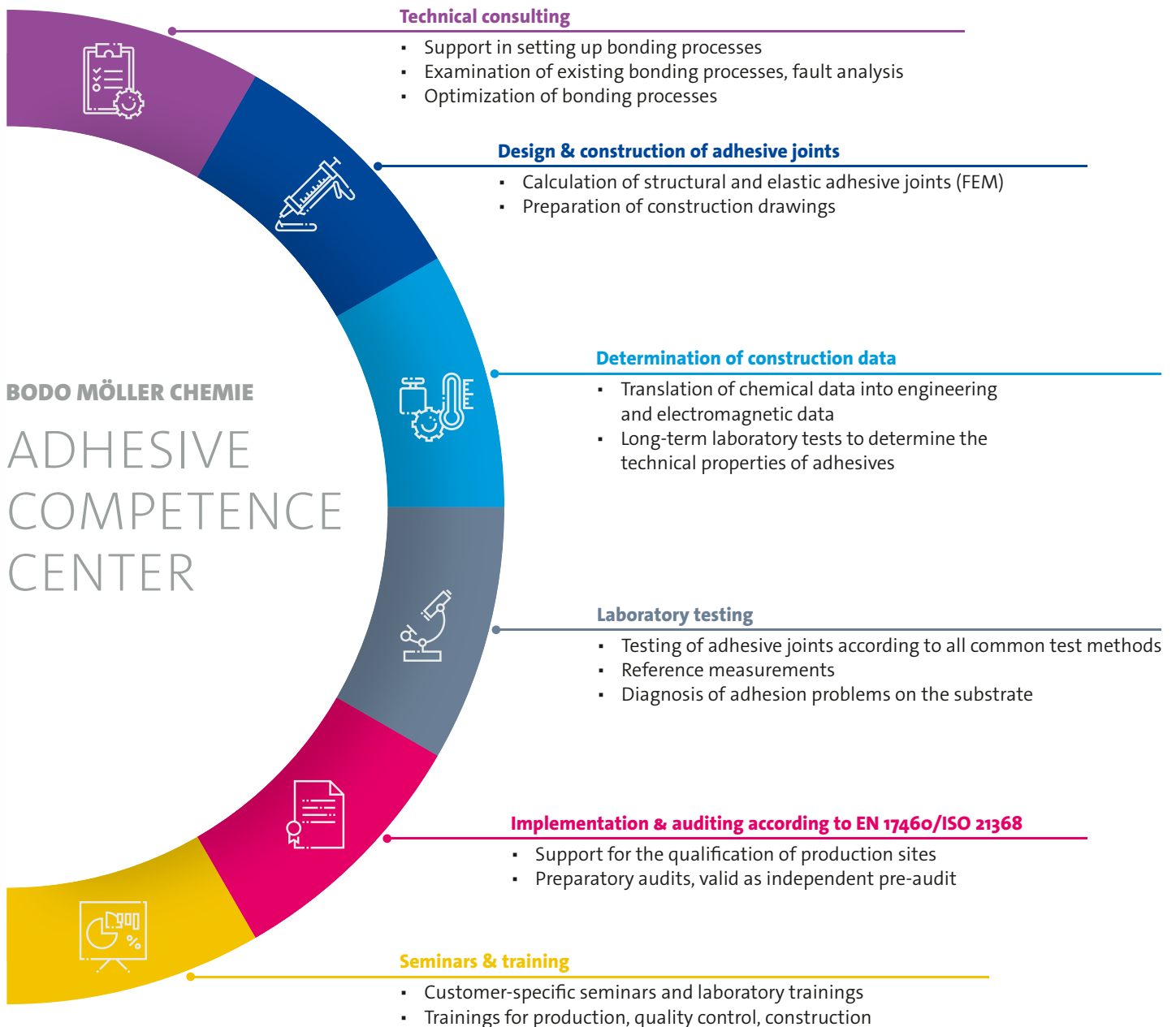
	Pot life at 25 °C	Demolding time at 25 °C	Thermal stability	
RenGel® SW 404 / HY 2404	Blue	15 min	7 h	80 °C
RenGel® SW 18 / HY 2404	Green	10 min	12 h	85 °C
RenGel® SV 410 / HY 2404	White	25 min	12 h	70 °C

Do you need support in selecting a suitable product for your application? Please contact our technical consultants for detailed product information, samples and process advice. We will be pleased to support you.

Application technology center

With our **Adhesive Competence Center**, we offer full service in all matters related to adhesive application technology – from product selection all the way to product validation, process simulation and engineering data.

The Adhesive Competence Center is certified for the designing of bonding joints according to ISO 21368 and EN 17460 and our Adhesive Laboratory has a Competence Approval for ISO 21368 and EN 17460. All measurements are carried out in accordance with international DIN, EN and ISO standards.





QUALITY & SAFETY

ISO 9001 Quality management**ISO 14001** Environmental management**ISO 45001** Occupational health & safety**EN 9120** Distribution and repacking for aviation industry**EN 17460** Adhesive bonding of railway vehicles (laboratory)**ISO 21368** Quality requirements for adhesive bonding processes (laboratory)

AN EXCERPT OF OUR LONGTIME PARTNERS



porcherindustries®



■ GERMANY

Bodo Möller Chemie GmbH
Headquarters
Offenbach a. M.
+49 69 838326-0 | info@bm-chemie.de

■ AUSTRIA

Bodo Möller Chemie Austria GmbH
Vienna
+43 120 51907050 | info@bm-chemie.at

■ SWITZERLAND

Bodo Möller Chemie Schweiz AG
Chur
+41 52 2031930 | info@bm-chemie.ch

■ FRANCE

Bodo Möller Chemie France SAS
Sales Office *Ruaudin*
+33 243 240429 | bureau@bm-chemie.fr
Sales Office *Lyon*
+33 478 982337 | bureaulyon@bm-chemie.fr

■ BENELUX

Bodo Möller Chemie Benelux N.V.
Kruibeke (Belgium)
+32 3 2352135 | info@bm-chemie.be

■ SPAIN

Bodo Möller Chemie Spain s.l.
Rivas-Vaciamadrid
+34 916 286909 | info@bm-chemie.es

■ PORTUGAL

Bodo Moeller Chemie Portugal Unipessoal LDA
Valbom
+351 937 198020 | info@bm-chemie.pt

■ ITALY

Bodo Möller Chemie Schweiz AG
Succursale Milano
+41 799199904 | info@bm-chemie.ch

■ UNITED KINGDOM / IRELAND

Bodo Möller Chemie UK Ltd.
Manchester (Great Britain)
+44 161 8042029 | info@bm-chemie.co.uk

■ DENMARK

Bodo Möller Chemie Denmark Aps
Stenløse
+45 48 163470 | info@bm-chemie.dk

■ SWEDEN

Bodo Möller Chemie Sweden AB
Källered
+46 31 698952 | info@bm-chemie.se

■ NORWAY

Bodo Möller Chemie Norway NUF
Oslo
+45 48 16 34 70 | info@bm-chemie.no

■ FINLAND

Bodo Möller Chemie Finland Oy
Helsinki
+358 9 6829010 | info@bm-chemie.fi

■ ESTONIA / LATVIA / LITHUANIA

Bodo Möller Chemie Baltics OÜ
Tartu (Estonia)
+370 686 82 933 | info-baltics@bm-chemie.com

■ POLAND

Bodo Möller Chemie Polska Sp. z o.o.
Suchy Las
+48 61 8220975 | info@bm-chemie.pl
Adhesive Competence Center & Laboratory
Poznań
+48 605 550427 | acc@bm-chemie.pl

■ CZECH REPUBLIC / SLOVAKIA

Bodo Möller Chemie Czech & Slovakia, s.r.o.
Sales Office *Bratislava (Slovakia)*
+421 2 33006732 | info@bm-chemie.sk
Sales Office *Brno (Czech Republic)*
+420 776 686772 | info@bm-chemie.cz

■ HUNGARY

Bodo Möller Chemie Hungary Kft.
Tatabánya
+36 34 782019 | info@bm-chemie.hu

■ CROATIA / SLOVENIA / SERBIA

Bodo Möller Chemie Austria GmbH
Podružnica Zagreb
+385 91 2620276 | info-hr@bm-chemie.at

■ ROMANIA

Bodo Möller Chemie Austria GmbH
Sucursala Bucuresti
+40 314 362203 | info@bm-chemie.ro

■ TURKEY

Bodo Möller Turkey
Kimya Ürünleri Ticaret Ltd. Şti.
Beyoğlu/Istanbul
+90 212 2437634 | info-tr@bm-chemie.com

■ RUSSIA

Bodo Möller Chemie Russia LLC
Moscow
+7 495 1396000 | info@bm-chemie.ru

■ INDIA

Bodo Moeller Chemie India Pvt. Ltd.
Mumbai
+91 22 49741848 | info@bm-chemie.in

■ CHINA

Bodo Moeller Chemie (Shanghai) Co., Ltd.
Shanghai
+86 21 64750182 | info@bm-chemie.cn
Bodo Moeller Chemie Hong Kong Ltd.
Hong Kong
+86 21 64750182 | info@bm-chemie.hk
Sales offices in *Guangzhou, Shenzhen, Dongguan, Zhongshan, Chengdu, Chongqing, Kunshan, Zhengzhou*

■ THAILAND

Bodo Moeller Chemie (Thailand) Co., Ltd.
Sales Office *Bangkok*
+66 98 269 6088 | info-th@bm-chemie.com

■ VIETNAM

Bodo Moeller Chemie Vietnam Co., LTD
Hanoi
+84 9 63 69 45 65 | info-vn@bm-chemie.com

■ JAPAN

Bodo Moeller Chemie Japan K.K.
Tokyo
+81 3 4563 9908 | info-jp@bm-chemie.com

■ SOUTH KOREA

Bodo Möller Chemie Korea LTD.
Seoul
+82-10-6388-8272 | info-kr@bm-chemie.com

■ ISRAEL

BM Chemie Israel Ltd.
Tel Aviv-Yafo
+972 36 377366 | info@bm-chemie.co.il

■ MIDDLE EAST

Bodo Möller Chemie Middle East FZE
Dubai (UAE)
+971 4 8813833 | info@bm-chemie.ae
Personal Care Application Laboratory
Dubai (UAE)
Phone +971 4 5770944 | info@bm-chemie.ae

■ LEBANON

Bodo Moeller Chemie Lebanon S.A.L
Beirut
Phone +961 01 609837 | info@bm-chemie.ae

■ JORDAN

Bodo Moeller Chemie Jordan LLC
Amman
Phone +962 6 2005190 | info@bm-chemie.ae

■ EGYPT

Bodo Moeller Chemie Egypt SAE
Bodo Moeller Chemie Egypt Import Ltd.
Sales Office *Cairo*
+20 2 226963-91 | info@bm-chemie.com.eg
Bodo Moeller Chemie Egypt SAE
Sales Office *Alexandria*
+20 3 3922061 | info@bm-chemie.com.eg
Production Plant *Sadat City*
+20 4 82656041 | info@bm-chemie.com.eg

■ MOROCCO

Bodo Moeller Chemie Morocco SARLAU
Casablanca
+212 522 262732 | info@bm-chemie.ma

■ KENYA

Bodo Moeller Chemie Kenya Ltd.
Nairobi
+254 788 071608 | info@bm-chemie.co.za

■ NIGERIA

Bodo Moeller Chemie Nigeria FZE
Lekki Free Zone, Lagos
+971 4 8813833 | info@bm-chemie.ae

■ SOUTH AFRICA / SUB-SAHARA REGION

Bodo Möller Chemie South Africa (PTY) Ltd.
Sales Office *Port Elizabeth*
+27 41 3641335 | info@bm-chemie.co.za
Sales Office *Johannesburg*
+27 114 501745 | info@bm-chemie.co.za

■ USA

Bodo Moeller Chemie Corp.
Atlanta, Georgia
+1 770 2952288 | info-us@bm-chemie.com

■ MEXICO

Bodo Möller Chemie México, S. de R.L. de C.V.
Puebla
+52 222 2405168 | info@bm-chemie.mx
BCC
A company of BODO MÖLLER CHEMIE
Chihuahua
+52 614 421 0287 | serviciocliente@dqnte.com