

# sophisticated LUXURY

Colorstream® Mineral Red  
Product Information

Products are warranted to meet the specifications set forth on their label/packaging and/or certificate of analysis at the time of shipment or for the expressly stated duration. Merck Electronics KGaA ("Merck") provides information and advice on application technologies and relevant regulations based upon its current knowledge and opinion. MERCK MAKES NO REPRESENTATION OR WARRANTY OF ANY KIND, EXPRESS OR IMPLIED, INCLUDING MERCHANTABILITY OR FITNESS FOR A PARTICULAR USE REGARDING OUR PRODUCTS, THEIR APPLICATION OR ANY INFORMATION PROVIDED IN CONNECTION THEREWITH. Merck shall not in any event be liable for incidental, consequential, indirect, exemplary or special damages of any kind resulting from any use or failure of the products. Customer is responsible for and must independently determine the suitability of Merck's products for its products, intended use and processes. The foregoing information and suggestions are also provided without warranty of non-infringement as to intellectual property rights of third parties and shall not be construed as any inducement to infringe the rights of third parties. Customer shall be responsible for obtaining any applicable third party intellectual property licenses. All sales are subject to Merck's complete Terms and Conditions of Sale. Prices are subject to change without notice. Merck reserves the right to discontinue products without prior notice.

© 2023 Merck KGaA, Darmstadt, Germany and/or its affiliates. Merck, the vibrant M, Xirallic and Colorstream are trademarks of Merck KGaA, Darmstadt, Germany or its affiliates. All other trademarks are the property of their respective owners. Detailed information on trademarks is available via publicly accessible resources.

## eternal red shimmer

- Intensive high chromatic red
  - Bluish-red to neutral red color flop
  - Retains its red color at all angles
  - Extraordinary hiding performance

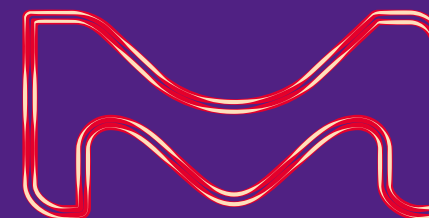
**Merck Electronics KGaA**  
Electronics | Surface Solutions  
Frankfurter Str. 250  
64293 Darmstadt, Germany  
effects-for-coatings.com

**EMD Performance Materials Corp.**  
Surface Solutions  
1200 Intrepid Avenue, Suite 300  
Philadelphia, PA 19112, USA  
emd-pigments.com  
An affiliate of Merck KGaA, Darmstadt, Germany

**Merck Performance Materials G.K.**  
Surface Solutions  
ARCO Tower, 11F  
1-8-1, Shimomeguro  
Meguro-ku  
Tokyo 153-8605, Japan  
merck-performance-materials.jp  
An affiliate of Merck KGaA, Darmstadt, Germany



W.589268 03/2023





Colorstream®

# Mineral Red

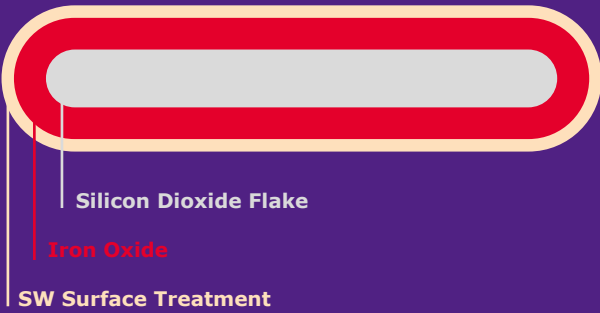
Redefine Luxury

The exceptional shimmering effect of Mineral Red takes full control of your attention when looking at it. It feels like we are breaking into clouds of ground crystals, where rays of light are dancing with a very fine precious powder. It seems impossible tracking the infinite number of lightrays being suddenly reflected back to our vision. It seems like they are massaging our retina. We hold our breath for a second and are completely overwhelmed by a feeling of sophisticated luxury. Mineral Red stands for a bluish-red color tone that redefines luxurious mondaine reds.

## Mondaine styling opportunities

Colorstream® Mineral Red radiates luxury and attracts your attention with its powerful traits: intense, highly chromatic red, extraordinary hiding power and a bluish-red color highlight.

Schematic composition of  
Colorstream® Mineral Red



Application

Colorstream® F20-52 SW Mineral Red is equipped with our SW surface treatment. Therefore it is the perfect pigment for any outdoor application. The excellent performance guarantees a long-lasting intensive red for all application fields and various designs. The pigment is the perfect choice in liquid systems as well as in powder coatings.

100.0 % Colorstream® Mineral Red  
PMC¹ in dry film 18.0 %  
on white background



83.7 % Colorstream® Mineral Red  
16.3 % Emperor® 2000²  
PMC¹ in dry film 21.5 %  
on white background



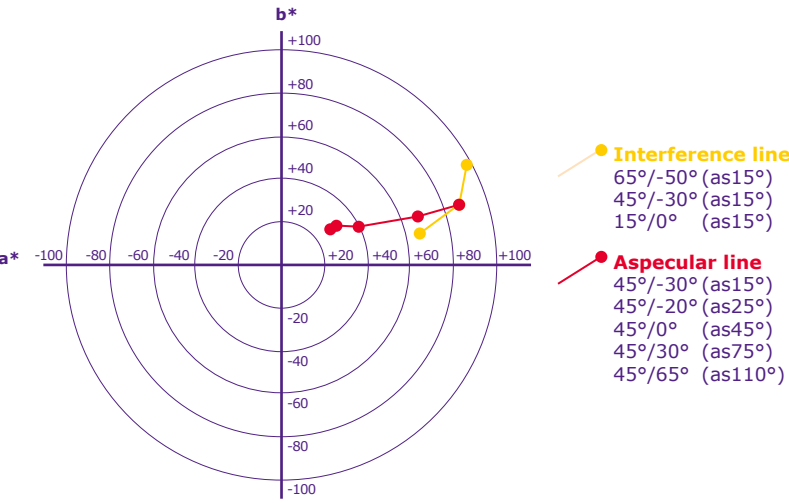
52.0 % Colorstream® Mineral Red  
20.4 % Hostaperm® Red Violet ER 02³  
25.7 % Cinilex® Red SR3C⁴  
1.9 % Special Black 100⁵  
PMC¹ in dry film 25.5 %  
on white background



35.4 % Colorstream® Mineral Red  
36.6 % Xirallic® NXT Tigris Blue  
19.3 % Hostaperm® Red Violet ER 02³  
7.5 % Cinilex® Red SR3C⁴  
1.2 % Special Black 100⁵  
PMC¹ in dry film 28.0 %  
on white background

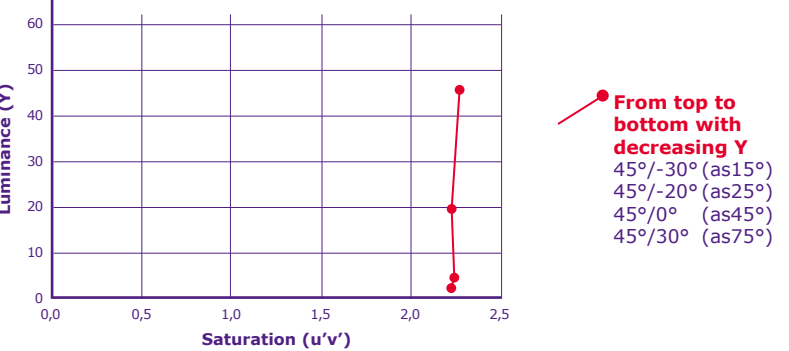


Coloristic behavior

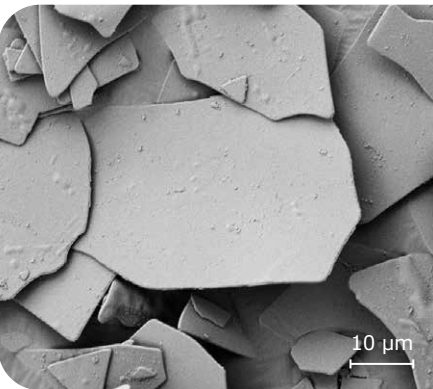


**a\*, b\* Color coordinates of a masstone coating**  
(PMC¹ = 18%, coating thickness 15 µm, on a black substrate), angles marked according DIN 6175-2. Instrument: Gonio-Spectrophotometric Measurement System GCMS-4 by Murakami.

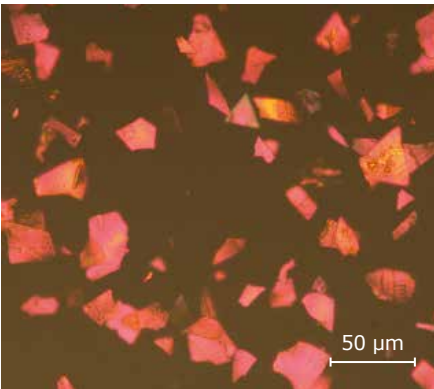
High chromatic red



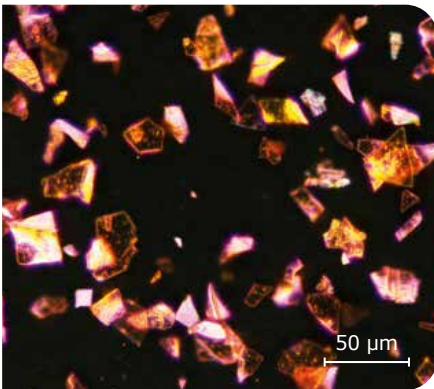
Luminance and Saturation in dependence of the aspecular angles



Typical scanning electron microscope image of Colorstream® F20-52 SW Mineral Red



Typical light microscope bright field image (opt. magnification 200x) of Colorstream® F20-52 SW Mineral Red



Typical light microscope dark field image (opt. magnification 200x) of Colorstream® F20-52 SW Mineral Red

# details

PRODUCT DATA

| Ordering Information |                    | Positioning       |                  |
|----------------------|--------------------|-------------------|------------------|
| Product line         | Colorstream®       | Color             | Masstone red     |
| Nomenclature         | F20-52 SW          | Sparkle           | Pearl Effect     |
| Name                 | Mineral Red        | Hiding power      | Semi-transparent |
| Item No.             | 1.58270            | Surface treatment | SW               |
| Package size         | 150 g, 1 kg, 15 kg | Preparation       | -                |

TECHNICAL DATA

| Physical Properties        | Value               | Method            | Remark                 |
|----------------------------|---------------------|-------------------|------------------------|
| Form                       | Free-flowing powder | DIN-EN ISO 787-2  |                        |
| Density                    | 3.2 g/ml            | DIN-EN ISO 787-10 |                        |
| Bulk density               | 21 g/100 ml         | DIN 53466         |                        |
| Oil absorption             | 78 g/100 g          | DIN EN ISO 787-5  |                        |
| Heat stability             | ≤ 200 °C            | Merck method      | 30 min. N₂-atmosphere  |
| Water solubility           | 0.18 %              | Merck method      | Practically insoluble  |
| Electrical conductivity    | 9 µS/cm             | DIN-EN ISO 787-14 | 10% aqueous suspension |
| pH value                   | 6.8                 | DIN-EN ISO 787-9  | 10% aqueous suspension |
| Particle size distribution | 5-40 µm             | ISO 13320-1       |                        |
| d10, d50, d90              | 9.5, 19.4, 34.5 µm  | ISO 13320-1       |                        |

WEATHERING DATA⁶

| Test  | Test Conditions   | Test results  |
|---|---|---|
| Humidity resistance test<br>DIN EN ISO 6270-2 | PC⁷: 4.2 % Colorstream® F20-52 SW Mineral Red<br>Duration: 240 h, Temperature: 40°C<br>Relative humidity: 100 % | Gloss retention after 24 h (20°): 99.7 %<br>DOI after 24 h: 100.7 %<br>Cross hatch after 1 h: 0 |
| Accelerated weathering<br>SAE J 2527          | PC⁷: 3.8 % Colorstream® F20-52 SW Mineral Red<br>black reduction<br>Duration: 4000 h                            | Gloss retention after 4000 h: 100 %<br>Color change ΔE after 4000 h⁸: 25°/ 1.13; 45°/ 0.32      |

¹ Pigment Mass Concentration (PMC): Mass of pigment calculated on total solid content of coating  
² Emperor® is a trademark of Cabot Corporation, USA  
³ Hostaperm® is a trademark registered in many countries (Heubach Group)  
⁴ Cinilex® is a trademark of Cinic Chemicals Europe Sarl, France  
⁵ Special Black 100 is a product of Orion Engineered Carbons S.A, Luxembourg  
⁶ Test system: 2-coat OEM thermosetting paint  
⁷ Pigment Concentration (PC): Mass pigment based on total liquid coating  
⁸ BYK-mac i, Byk Gardner GmbH

The information on this page is typical technical data to characterize the pigment. These values are not meant as specifications and they do not have binding character. The product specification is available separately, on request.